

CUSHMAN & WAKEFIELD

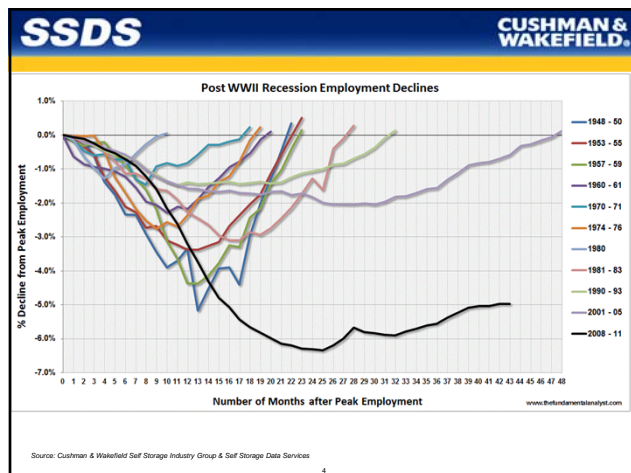
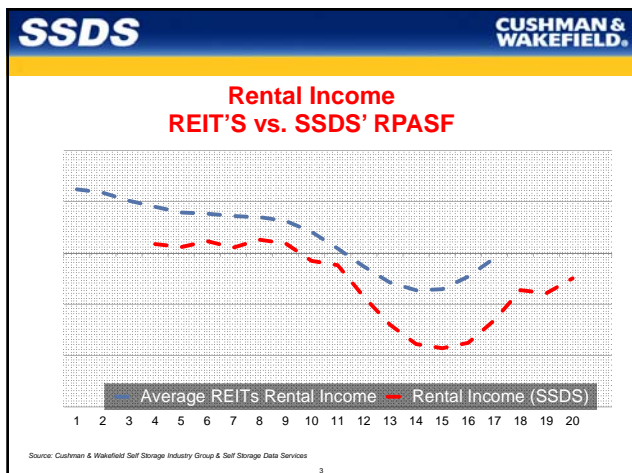
Texas Self-Storage
Census & Market Research Report Findings

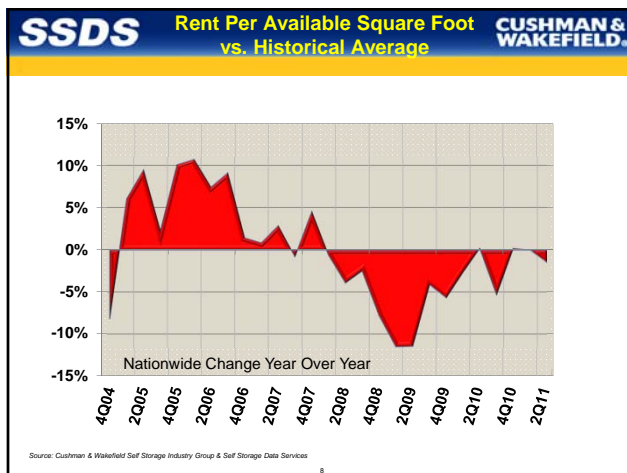
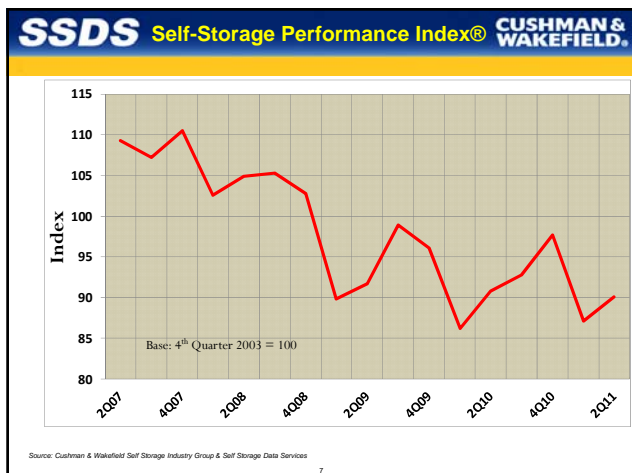
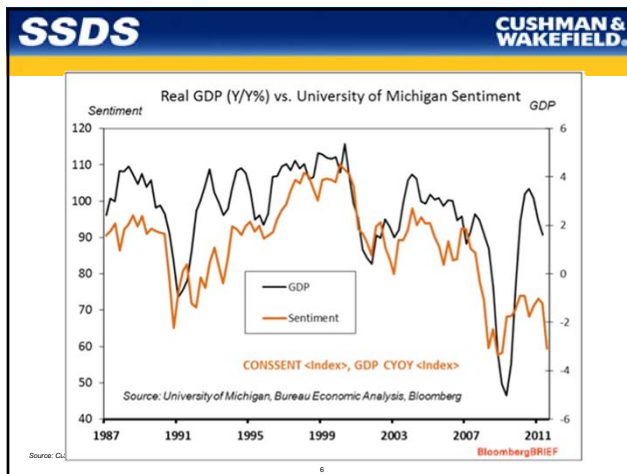
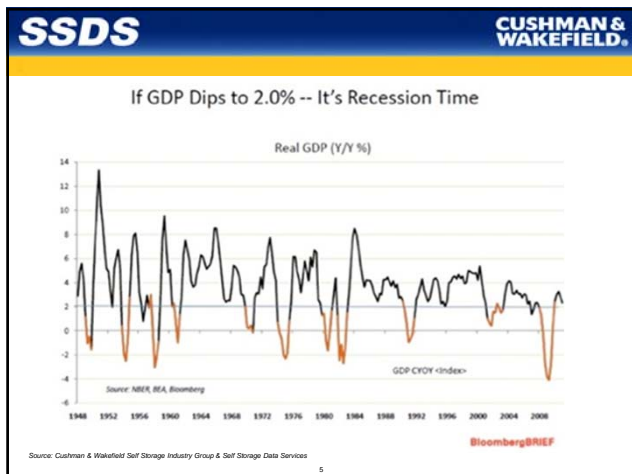
Moving With Confidence

CUSHMAN & WAKEFIELD

Performance Trends
Nationwide

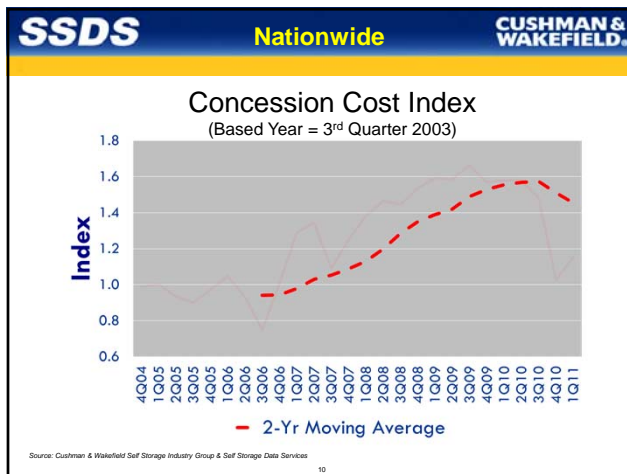
Moving With Confidence





SSDS		Performance-At-A-Glance		CUSHMAN & WAKEFIELD	
Nationwide	Quarterly 2Q11 vs. 1Q11	Seasonal 2Q11 vs. 2Q10	Annual Current Four Qtrs. vs. Preceding Four Qtrs.		
Asking Rental Rates	↔ No Change 0.0%	↓ Down -2.2%	↓ Down	↓ Down	↓ Down -0.6%
Physical Occupancy	↔ No Change 0.0%	↓ Down -3.5%	↓ Down	↓ Down	↓ Down -0.9%
Rental Income	↑ Up 1.0%	↓ Down -2.0%	↓ Down	↓ Down	↓ Down -0.5%

Source: Cushman & Wakefield Self Storage Industry Group & Self Storage Data Services



Performance Trends

South Region

SSDS		South Division		CUSHMAN & WAKEFIELD	
	Sample Size 2 nd Quarter 2011				
	Total Facilities	Sample Size	% Sample	14,525	2,570 17.7%
South Division (Eight States)	2Q10	2Q11	% Change		
Asking Rental Rate	\$0.8107	\$0.8141	+0.4%		
Physical Occupancy	80.6%	80.2%	-0.4%		
Rental Income	\$0.5620	\$0.5873	+4.5%		

Source: Cushman & Wakefield Self Storage Industry Group & Self Storage Data Services

SSDS Geographical Demand **CUSHMAN & WAKEFIELD**

Move-Ins vs. Move-Outs
August 2010 vs. August 2011
Sample Size: 1,031,00± Storage Units

	East Region	Midwest Region	South Region	West Region
Move-Ins	-0.1%	+2.2%	-3.3%	+2.1%
Move-Outs	-1.7%	-3.3%	-2.5%	+2.9%

Source: Cushman & Wakefield Self Storage Industry Group & Self Storage Data Services

CUSHMAN & WAKEFIELD

Performance Trends

Southwest Division

Moving With Confidence

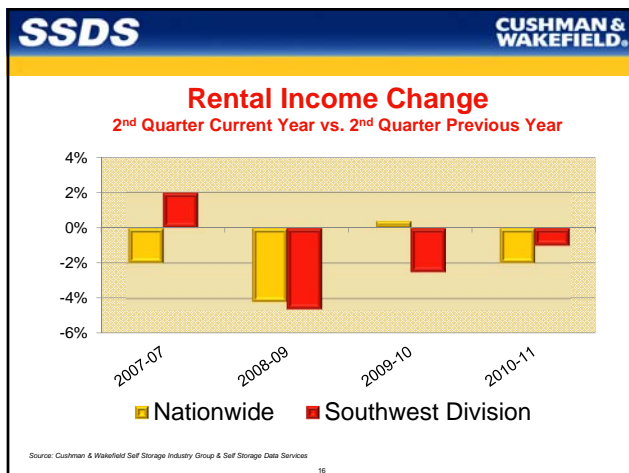
SSDS Southwest Davison **CUSHMAN & WAKEFIELD**

Sample Size
2nd Quarter 2011

Total Facilities	Sample Size	% Sample
7,912	1,377	17.4%

Southwest Division	2Q10	2Q11	% Change
Asking Rental Rate	\$0.7783	\$0.7803	+0.3%
Physical Occupancy	83.1%	81.2%	-1.9%
Rental Income	\$0.5662	\$0.5781	+2.1%

Source: Cushman & Wakefield Self Storage Industry Group & Self Storage Data Services



Performance Trends
Texas Markets

CUSHMAN & WAKEFIELD

Moving With Confidence

SSDS Texas Owner's Opinion Survey **CUSHMAN & WAKEFIELD**

		Strongly Agree	Agree	No Opinion	Disagree	Strongly Disagree
Past 12 Months Performed as Expected	2011	19%	43%	12%	23%	2%
	2010	17%	52%	15%	11%	5%
I Anticipate Will Meet My Expected ROI	2011	21%	53%	15%	11%	1%
	2010	16%	52%	9%	17%	8%

Source: Cushman & Wakefield Self Storage Industry Group & Self Storage Data Services

SSDS MSA Performances Comparisons **CUSHMAN & WAKEFIELD**

	Change 2Q 2010 vs. 2Q 2011			
	Austin	Dallas	Houston	San Antonio
Asking Rental Rates	0.0%	-5.1%	0.0%	+5.7%
Physical Occupancy	-1.1%	-5.0%	-3.0%	+6.0%
2Q11	82%	80%	80%	89%
Facilities Offering Concessions	+24%	-14.0%	-16.1%	+14.5%
Rental Income	-4.1%	-3.5%	+0.9%	+15.8%
Sample Size:	132 Facilities	500 Facilities	453 Facilities	150 Facilities

19

SSDS Austin, MSA 2Q10 vs. 2Q11 **CUSHMAN & WAKEFIELD**

Key Demographics			
	2010	2015	% Chg.
Population	1,746,746	2,060,409	18.0%
Households	629,619	729,688	15.9%
Median Disposal Income	\$48,587	\$51,001	5.0%

Asking Rental Rates

No Change 0.0%

↓

Physical Occupancy

Down -1.1%

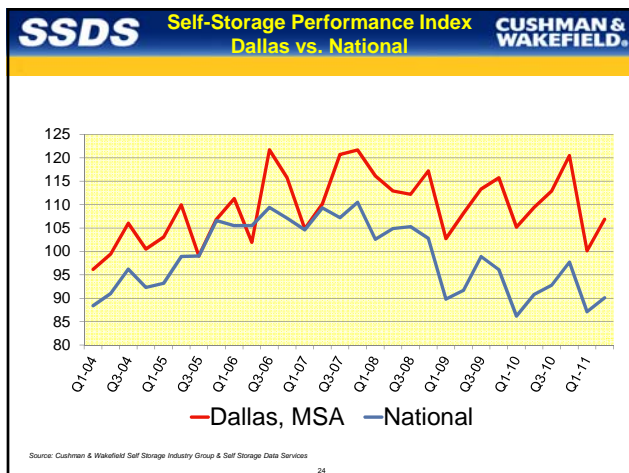
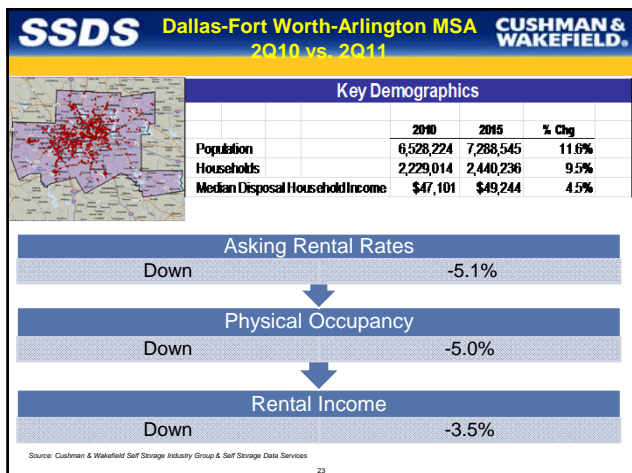
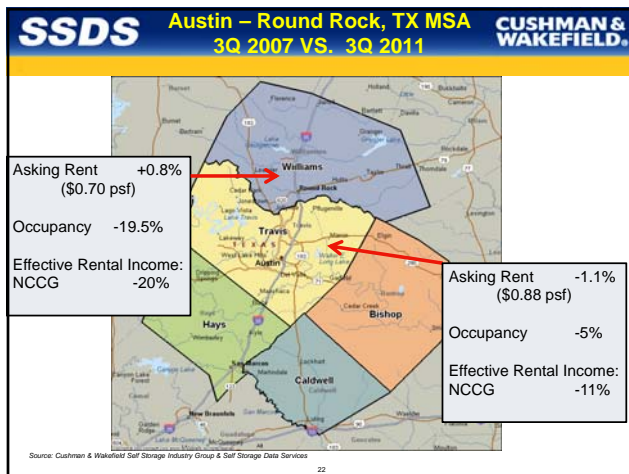
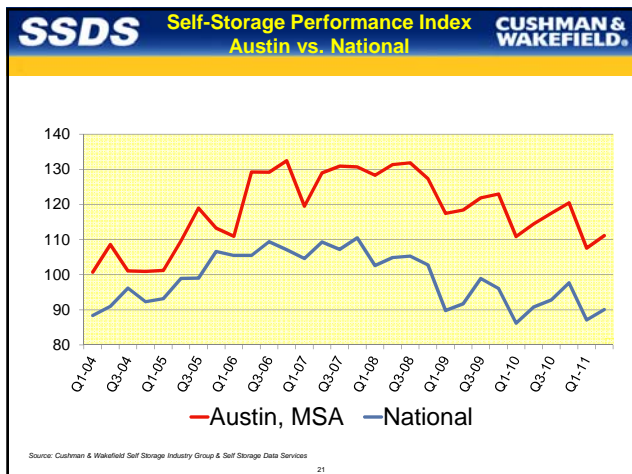
↓

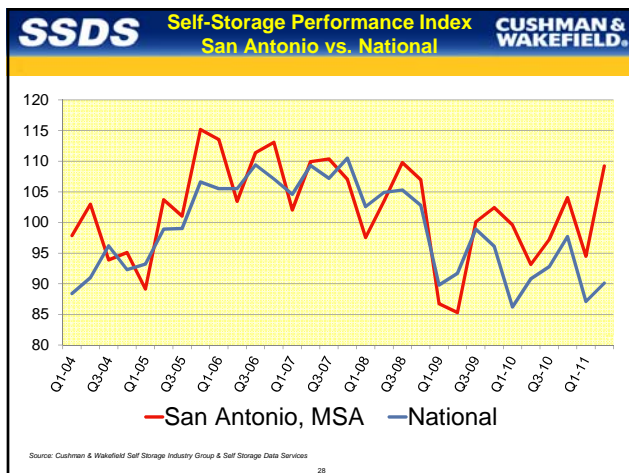
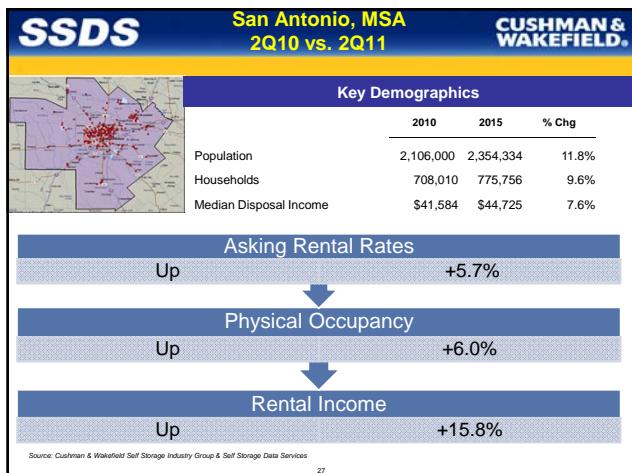
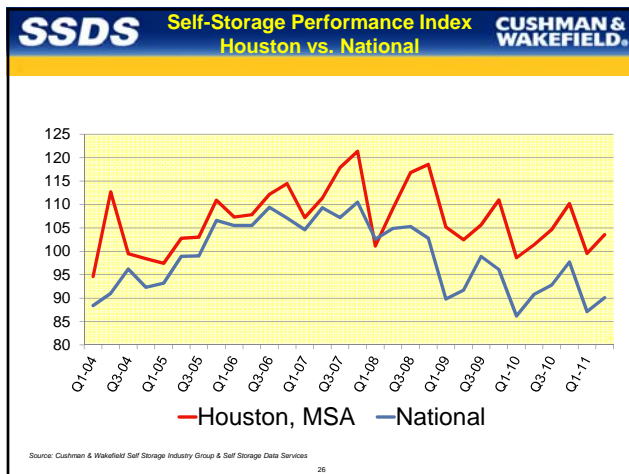
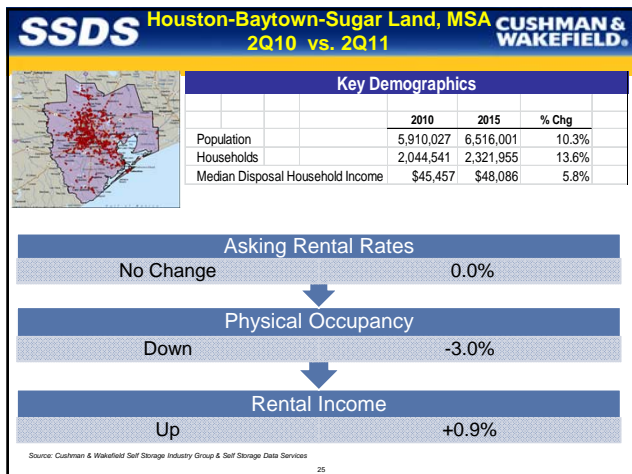
Rental Income

Down -4.1%

Source: Cushman & Wakefield Self Storage Industry Group & Self Storage Data Services

20





SSDS Performance Conclusions **CUSHMAN & WAKEFIELD**

- Self-Storage Is In Recovery and Most Markets Are Operating Near Their Historical Levels of Performance
- Texas Has Outperformed the Nation During the Recent Recession (Self Storage Performance Index)
- The Trend in Rental Income After Accounting for Changes in Rental Rates, Occupancy and the Cost of Concessions Has Been Increasing Steadily Since the 2Q 2009

Source: Cushman & Wakefield Self Storage Industry Group & Self Storage Data Services

CUSHMAN & WAKEFIELD

Current Investment Market Trends

Moving With Confidence

SSDS Key Indicators **CUSHMAN & WAKEFIELD**

**Table DSS-1
DOMESTIC SELF-STORAGE MARKET
First Half 2011**

	FIRST HALF 2011	SECOND HALF 2010	FIRST HALF 2010
DISCOUNT RATE (IRR)^a			
Range	10.00% - 12.00%	10.00% - 12.00%	10.00% - 13.00%
Average	10.50%	10.75%	11.50%
Change (Basis Points)		- 25	- 100
OVERALL CAP RATE (OAR)^a			
Range	6.75% - 9.00%	7.00% - 9.50%	7.00% - 10.00%
Average	7.50%	7.75%	8.45%
Change (Basis Points)		- 25	- 95
RESIDUAL CAP RATE			
Range	7.00% - 9.25%	8.00% - 10.50%	8.00% - 10.50%
Average	7.75%	9.00%	8.75%
Change (Basis Points)		- 125	- 100

Source: Cushman & Wakefield Self Storage Industry Group & Self Storage Data Services

SSDS Key Indicators **CUSHMAN & WAKEFIELD**

**Table DSS-1
DOMESTIC SELF-STORAGE MARKET
First Half 2011**

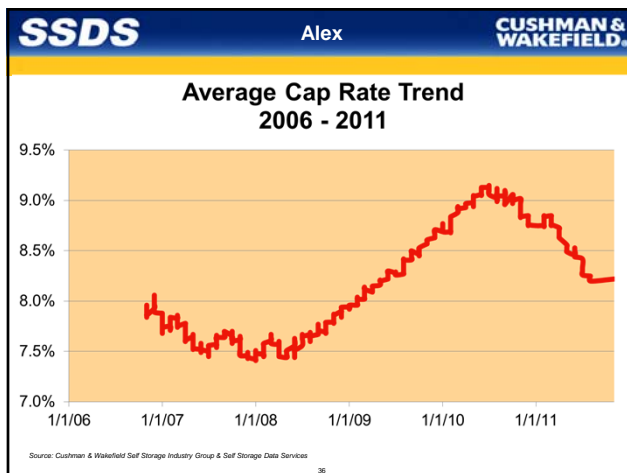
	FIRST HALF 2011	SECOND HALF 2010	FIRST HALF 2010
MARKET RENT CHANGE^b			
Range	1.00% - 5.00%	1.00% - 5.00%	1.00% - 5.00%
Average	3.50%	3.50%	3.50%
Change (Basis Points)		0	0
EXPENSE CHANGE^b			
Range	2.00% - 5.00%	2.00% - 5.00%	2.00% - 5.00%
Average	3.00%	3.00%	3.00%
Change (Basis Points)		0	0
AVERAGE MARKETING TIME^c			
Range	3.00 - 9.00	3.00 - 9.00	3.00 - 12.00
Average	5.00	5.00	8.00
Change (%)		0	- 37.50

a. Rate on unleveraged, all-cash transactions b. Initial rate of change c. In months
Source: Cushman & Wakefield

SSDS		Cap Rate Calamity: Impact Of Rising Interest Rates On Cap Rates & Values		CUSHMAN & WAKEFIELD.	
MORTGAGE COMPONENT					
TYPICAL LOAN TERMS					
Mortgage Rate	7.25%	Mortgage Rate	5.50%		
Amortization Term (Years)	30	Amortization Term (Years)	30		
Num of Payments	360	Num of Payments	360		
Loan-to-Value Ratio (LTV)	65.00%	Loan-to-Value Ratio (LTV)	65.00%		
Equity Ratio (E)	35.00%	Equity Ratio (E)	35.00%		
Mortgage Constant (R _m)	8.19%	Mortgage Constant (R _m)	6.81%		
Compiled by Cushman & Wakefield Western, Inc.					
EQUITY COMPONENT					
Equity Dividend Rate (R _e)	8.00%	Equity Dividend Rate (R _e)	8.00%		
Compiled by Cushman & Wakefield Western, Inc.					
R_w BY BAND OF INVESTMENT					
Mortgage Ratio	65.00%	Mortgage Ratio	65.00%		
Annual Mortgage Constant	8.19%	Annual Mortgage Constant	6.81%		
Mortgage Component	5.32%	Mortgage Component	4.43%		
Equity Ratio	35.00%	Equity Ratio	35.00%		
Equity Dividend Rate	8.00%	Equity Dividend Rate	8.00%		
Equity Component	2.80%	Equity Component	2.80%		
Indicated Overall Rate (R _w)	8.12%	Indicated Overall Rate (R _w)	7.23%		
Compiled by Cushman & Wakefield Western, Inc.					
Equity returns often decline as capital declines and in part of the concomitant herd mentality of investors. Additionally, leverage ratios may increase and debt coverage ratios decrease, causing upward pressure on asset pricing.					
Source: Cushman & Wakefield Self Storage Industry Group & Self Storage Data Services					

SSDS		Size		CUSHMAN & WAKEFIELD.	
2011 Sale Characteristics Nationwide Sample					
	Min	Median	Max		
Sale Price	\$199,500	\$4,000,000	\$23,000,000		
Price per Net Rentable Area	\$15.67	\$65.03	\$261.36		
Net Rentable Area	9,530	61,800	114,160		
Cap Rate	6.10%	7.87%	10.50%		
Source: Cushman & Wakefield Self Storage Industry Group & Self Storage Data Services					

SSDS		Facility Listing Characteristics		CUSHMAN & WAKEFIELD.	
Type of Facility	Median Number of Units	Population Density (People per Square Mile)	Median Number of Competitors		
Less than 100 Units	77	223	2		
100 – 299 Units	185	707	5		
300 Unit or More	446	997	6		
Portfolios	549	2,545	6		
Source: Cushman & Wakefield Self Storage Industry Group & Self Storage Data Services					



SSDS Discounted Cash Flow CUSHMAN & WAKEFIELD.

Year	1	2	3	4	5	6	7	8	9	10	11	12	13	14	15	16	17	18	19	20	21	22	23	24	25	26	27	28	29	30																																																																																																																																																																																																																																																																																																																																																																																																																																																																																																																																																																																																																																																									
POTENTIAL GROSS REVENUE	\$322,758	\$355,656	\$390,556	\$428,456	\$470,356	\$516,256	\$567,156	\$624,056	\$686,956	\$756,856	\$834,756	\$921,656	\$1,018,556	\$1,126,456	\$1,245,356	\$1,376,256	\$1,519,156	\$1,675,056	\$1,843,956	\$2,026,856	\$2,224,756	\$2,438,656	\$2,669,556	\$2,917,456	\$3,183,356	\$3,468,256	\$3,773,156	\$4,098,056	\$4,443,956	\$4,810,856	\$5,200,756	\$5,614,656	\$6,053,556	\$6,518,456	\$7,010,356	\$7,530,256	\$8,079,156	\$8,658,056	\$9,267,956	\$9,909,856	\$10,584,756	\$11,294,656	\$12,040,556	\$12,823,456	\$13,645,356	\$14,507,256	\$15,410,156	\$16,355,056	\$17,342,956	\$18,374,856	\$19,451,756	\$20,574,656	\$21,744,556	\$22,962,456	\$24,229,356	\$25,546,256	\$26,914,156	\$28,333,056	\$29,803,956	\$31,326,856	\$32,902,756	\$34,531,656	\$36,214,556	\$37,952,456	\$39,745,356	\$41,593,256	\$43,496,156	\$45,454,056	\$47,466,956	\$49,534,856	\$51,657,756	\$53,835,656	\$56,068,556	\$58,356,456	\$60,699,356	\$63,097,256	\$65,550,156	\$68,058,056	\$70,621,956	\$73,241,856	\$75,917,756	\$78,649,656	\$81,427,556	\$84,251,456	\$87,121,356	\$90,038,256	\$93,002,156	\$96,013,056	\$99,070,956	\$102,174,856	\$105,324,756	\$108,520,656	\$111,762,556	\$115,050,456	\$118,384,356	\$121,764,256	\$125,190,156	\$128,662,056	\$132,180,956	\$135,746,856	\$139,359,756	\$143,019,656	\$146,726,556	\$150,480,456	\$154,281,356	\$158,129,256	\$162,024,156	\$165,966,056	\$170,954,956	\$175,990,856	\$181,072,756	\$186,200,656	\$191,374,556	\$196,594,456	\$201,860,356	\$207,172,256	\$212,530,156	\$217,934,056	\$223,383,956	\$228,879,856	\$234,421,756	\$240,010,656	\$245,646,556	\$251,329,456	\$257,059,356	\$262,836,256	\$268,660,156	\$274,531,056	\$280,448,956	\$286,413,856	\$292,425,756	\$298,484,656	\$304,590,556	\$310,743,456	\$316,943,356	\$323,190,256	\$329,484,156	\$335,825,056	\$342,212,956	\$348,647,856	\$355,129,756	\$361,658,656	\$368,234,556	\$374,857,456	\$381,527,356	\$388,244,256	\$395,008,156	\$401,819,056	\$408,676,956	\$415,581,856	\$422,533,756	\$429,532,656	\$436,579,556	\$443,673,456	\$450,814,356	\$457,902,256	\$465,037,156	\$472,219,056	\$479,447,956	\$486,723,856	\$494,046,756	\$501,416,656	\$508,833,556	\$516,297,456	\$523,808,356	\$531,366,256	\$538,971,156	\$546,623,056	\$554,321,956	\$562,067,856	\$569,860,756	\$577,699,656	\$585,584,556	\$593,515,456	\$601,492,356	\$609,515,256	\$617,584,156	\$625,698,056	\$633,857,956	\$642,062,856	\$650,312,756	\$658,607,656	\$666,947,556	\$675,332,456	\$683,762,356	\$692,237,256	\$700,757,156	\$709,322,056	\$717,931,956	\$726,586,856	\$735,287,756	\$744,034,656	\$752,827,556	\$761,666,456	\$770,550,356	\$779,479,256	\$788,453,156	\$797,472,056	\$806,535,956	\$815,644,856	\$824,798,756	\$833,997,656	\$843,241,556	\$852,530,456	\$861,864,356	\$871,243,256	\$880,667,156	\$890,136,056	\$899,650,956	\$909,210,856	\$918,815,756	\$928,465,656	\$938,160,556	\$947,900,456	\$957,685,356	\$967,515,256	\$977,390,156	\$987,310,056	\$997,274,956	\$1,007,284,856	\$1,017,339,756	\$1,027,439,656	\$1,037,584,556	\$1,047,774,456	\$1,058,009,356	\$1,068,289,256	\$1,078,614,156	\$1,088,984,056	\$1,099,408,956	\$1,109,888,856	\$1,120,423,756	\$1,130,913,656	\$1,141,458,556	\$1,152,058,456	\$1,162,713,356	\$1,173,423,256	\$1,184,188,156	\$1,195,008,056	\$1,205,882,956	\$1,216,812,856	\$1,227,797,756	\$1,238,837,656	\$1,249,932,556	\$1,261,082,456	\$1,272,287,356	\$1,283,547,256	\$1,294,862,156	\$1,306,232,056	\$1,317,656,956	\$1,329,136,856	\$1,340,671,756	\$1,352,261,656	\$1,363,906,556	\$1,375,606,456	\$1,387,361,356	\$1,399,171,256	\$1,411,036,156	\$1,422,956,056	\$1,434,929,956	\$1,446,952,856	\$1,459,024,756	\$1,471,145,656	\$1,483,316,556	\$1,495,537,456	\$1,507,808,356	\$1,520,129,256	\$1,532,499,156	\$1,544,918,056	\$1,557,385,956	\$1,569,902,856	\$1,582,468,756	\$1,595,084,656	\$1,607,750,556	\$1,620,466,456	\$1,633,232,356	\$1,646,048,256	\$1,658,914,156	\$1,671,830,056	\$1,684,795,956	\$1,697,811,856	\$1,710,877,756	\$1,723,993,656	\$1,737,159,556	\$1,750,375,456	\$1,763,641,356	\$1,776,957,256	\$1,790,323,156	\$1,803,739,056	\$1,817,204,956	\$1,830,720,856	\$1,844,286,756	\$1,857,902,656	\$1,871,568,556	\$1,885,284,456	\$1,899,050,356	\$1,912,866,256	\$1,926,732,156	\$1,940,648,056	\$1,954,613,956	\$1,968,629,856	\$1,982,695,756	\$1,996,811,656	\$2,010,877,556	\$2,024,993,456	\$2,039,159,356	\$2,053,375,256	\$2,067,641,156	\$2,081,957,056	\$2,096,322,956	\$2,110,738,856	\$2,125,204,756	\$2,139,720,656	\$2,154,286,556	\$2,168,902,456	\$2,183,568,356	\$2,198,284,256	\$2,213,050,156	\$2,227,866,056	\$2,242,731,956	\$2,257,647,856	\$2,272,613,756	\$2,287,629,656	\$2,302,695,556	\$2,317,811,456	\$2,332,977,356	\$2,348,193,256	\$2,363,459,156	\$2,378,775,056	\$2,394,140,956	\$2,409,556,856	\$2,425,022,756	\$2,440,538,656	\$2,456,104,556	\$2,471,720,456	\$2,487,386,356	\$2,503,102,256	\$2,518,868,156	\$2,534,684,056	\$2,550,550,956	\$2,566,467,856	\$2,582,434,756	\$2,598,451,656	\$2,614,518,556	\$2,630,635,456	\$2,646,802,356	\$2,663,019,256	\$2,679,286,156	\$2,695,603,056	\$2,711,969,956	\$2,728,386,856	\$2,744,853,756	\$2,761,370,656	\$2,777,937,556	\$2,794,554,456	\$2,811,221,356	\$2,827,938,256	\$2,844,705,156	\$2,861,522,056	\$2,878,388,956	\$2,895,305,856	\$2,912,272,756	\$2,929,289,656	\$2,946,356,556	\$2,963,473,456	\$2,980,640,356	\$2,997,857,256	\$3,015,124,156	\$3,032,441,056	\$3,049,807,956	\$3,067,224,856	\$3,084,691,756	\$3,102,208,656	\$3,119,776,556	\$3,137,394,456	\$3,155,062,356	\$3,172,780,256	\$3,190,548,156	\$3,208,366,056	\$3,226,233,956	\$3,244,151,856	\$3,262,120,756	\$3,280,140,656	\$3,298,211,556	\$3,316,333,456	\$3,334,506,356	\$3,352,730,256	\$3,371,005,156	\$3,389,331,056	\$3,407,707,956	\$3,426,135,856	\$3,444,614,756	\$3,463,144,656	\$3,481,725,556	\$3,500,357,456	\$3,519,039,356	\$3,537,771,256	\$3,556,553,156	\$3,575,385,056	\$3,594,266,956	\$3,613,198,856	\$3,632,180,756	\$3,651,212,656	\$3,670,294,556	\$3,689,426,456	\$3,708,608,356	\$3,727,840,256	\$3,747,122,156	\$3,766,454,056	\$3,785,835,956	\$3,805,267,856	\$3,824,749,756	\$3,844,281,656	\$3,863,863,556	\$3,883,495,456	\$3,903,177,356	\$3,922,909,256	\$3,942,691,156	\$3,962,523,056	\$3,982,404,956	\$4,002,336,856	\$4,022,318,756	\$4,042,350,656	\$4,062,432,556	\$4,082,564,456	\$4,102,746,356	\$4,122,978,256	\$4,143,260,156	\$4,163,592,056	\$4,183,973,956	\$4,204,405,856	\$4,224,887,756	\$4,245,419,656	\$4,265,991,556	\$4,286,603,456	\$4,307,255,356	\$4,327,947,256	\$4,348,679,156	\$4,369,451,056	\$4,390,262,956	\$4,411,114,856	\$4,432,006,756	\$4,452,938,656	\$4,473,910,556	\$4,494,922,456	\$4,515,974,356	\$4,537,066,256	\$4,558,198,156	\$4,579,370,056	\$4,600,581,956	\$4,621,833,856	\$4,643,125,756	\$4,664,457,656	\$4,685,829,556	\$4,707,241,456	\$4,728,693,356	\$4,750,185,256	\$4,771,717,156	\$4,793,289,056	\$4,814,900,956	\$4,836,552,856	\$4,858,244,756	\$4,879,976,656	\$4,901,748,556	\$4,923,560,456	\$4,945,412,356	\$4,967,304,256	\$4,989,236,156	\$5,011,208,056	\$5,033,220,956	\$5,055,274,856	\$5,077,368,756	\$5,099,502,656	\$5,121,676,556	\$5,143,890,456	\$5,166,144,356	\$5,188,538,256	\$5,210,972,156	\$5,233,446,056	\$5,255,959,956	\$5,278,513,856	\$5,301,107,756	\$5,323,741,656	\$5,346,415,556	\$5,369,129,456	\$5,391,883,356	\$5,414,677,256	\$5,437,511,156	\$5,460,385,056	\$5,483,308,956	\$5,506,272,856	\$5,529,276,756	\$5,552,320,656	\$5,575,404,556	\$5,598,528,456	\$5,621,692,356	\$5,644,896,256	\$5,668,140,156	\$5,691,424,056	\$5,714,747,956	\$5,738,111,856	\$5,761,515,756	\$5,784,959,656	\$5,808,443,556	\$5,831,967,456	\$5,855,531,356	\$5,879,135,256	\$5,902,779,156	\$5,926,463,056	\$5,950,186,956	\$5,973,950,856	\$5,997,754,756	\$6,021,598,656	\$6,045,482,556	\$6,069,406,456	\$6,093,370,356	\$6,117,374,256	\$6,141,418,156	\$6,165,502,056	\$6,189,625,956	\$6,213,789,856	\$6,237,993,756	\$6,262,237,656	\$6,286,521,556	\$6,310,845,456	\$6,335,209,356	\$6,359,613,256	\$6,384,057,156	\$6,408,541,056	\$6,433,064,956	\$6,457,628,856	\$6,482,232,756	\$6,506,876,656	\$6,531,560,556	\$6,556,284,456	\$6,581,048,356	\$6,605,852,256	\$6,630,696,156	\$6,655,580,056	\$6,680,503,956	\$6,705,467,856	\$6,730,471,756	\$6,755,515,656	\$6,780,599,556	\$6,805,723,456	\$6,830,887,356	\$6,856,091,256	\$6,881,335,156	\$6,906,619,056	\$6,931,942,956	\$6,957,306,856	\$6,982,710,756	\$7,008,154,656	\$7,032,638,556	\$7,058,162,456	\$7,082,726,356	\$7,108,330,256	\$7,133,974,156	\$7,159,658,056	\$7,185,381,956	\$7,211,145,856	\$7,236,949,756	\$7,262,793,656	\$7,288,677,556	\$7,314,601,456	\$7,340,565,356	\$7,366,569,256	\$7,392,613,156	\$7,418,697,056	\$7,444,820,956	\$7,470,984,856	\$7,497,188,756	\$7,523,432,656	\$7,549,716,556	\$7,576,040,456	\$7,602,404,356	\$7,628,808,256	\$7,655,252,156	\$7,681,736,056	\$7,708,259,956	\$7,734,823,856	\$7,761,427,756	\$7,788,071,656	\$7,814,755,556	\$7,841,479,456	\$7,868,243,356	\$7,895,047,256	\$7,921,891,156	\$7,948,775,056	\$7,975,698,956	\$8,002,662,856	\$8,029,666,756	\$8,056,710,656	\$8,083,794,556	\$8,110,918,456	\$8,138,082,356	\$8,165,286,256	\$8,192,529,156	\$8,219,813,056	\$8,247,136,956	\$8,274,500,856	\$8,301,904,756	\$8,329,348,656	\$8,356,832,556	\$8,384,356,456	\$8,411,919,356	\$8,439,521,256	\$8,467,163,156	\$8,494,845,056	\$8,522,566,956	\$8,550,328,856	\$8,578,130,756	\$8,605,972,656	\$8,633,854,556	\$8,661,776,456	\$8,689,738,356	\$8,717,740,256	\$8,745,782,156	\$8,773,864,056	\$8,801,985,956	\$8,830,147,856	\$8,858,349,756	\$8,886,591,656	\$8,914,873,556	\$8,943,195,456	\$8,971,557,356	\$8,999,959,256	\$9,028,401,156	\$9,056,883,056	\$9,085,404,956	\$9,113,966,856	\$9,142,568,756	\$9,171,210,656	\$9,199,892,556	\$9,228,614,456	\$9,257,376,356	\$9,286,178,256	\$9,315,020,156	\$9,343,902,056	\$9,372,823,956	\$9,401,785,856	\$9,430,787,756	\$9,460,829,656	\$9,490,911,556	\$9,521,033,456	\$9,551,195,356	\$9,581,397,256	\$9,611,639,156	\$9,641,921,056	\$9,672,242,956	\$9,702,604,856	\$9,733,006,756	\$9,763,448,656	\$9,793,930,556	\$9,824,452,456	\$9,855,014,356	\$9,885,616,256	\$9,916,258,156	\$9,946,940,056	\$9,977,661,956	\$10,008,423,856	\$10,039,225,756	\$10,070,067,656	\$10,10

SSDS **Thank You** **CUSHMAN & WAKEFIELD**

R. CHRISTIAN SONNE, MAI, MRICS
Cushman & Wakefield Western, Inc.
2020 Main Street, Suite 1000
Irvine, CA 92614
chris.sonne@cushwake.com

RAY WILSON, MAI, CRE
Self Storage Data Services / Cushman & Wakefield
122 West Sierra Madre Boulevard, Suite A
Sierra Madre, CA 91024
ray.wilson@cushwake.com

Source: Cushman & Wakefield Self Storage Industry Group & Self Storage Data Services

41